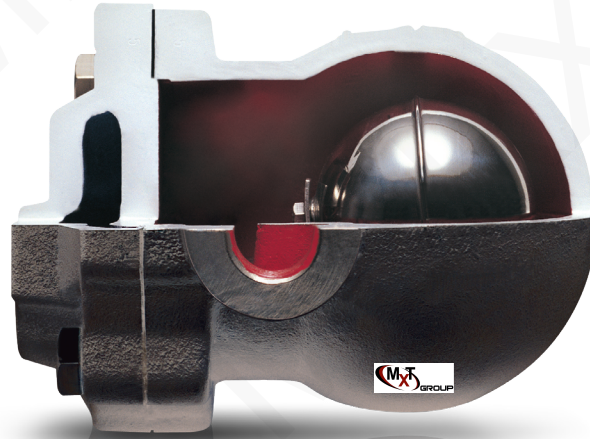


MXT-524600000



FLOAT TYPE AIR ELIMINATOR

GENERAL FEATURES

Any system filled with water or other liquids will not function correctly unless air and other incondensable gases are removed. HA-51 prevent air and other gases from retarding circulation, causing corrosion and noise, inhibiting the filling of systems or priming of pumps.

There are available in variety of designs for hot water, cold water and many other liquid systems. HA-51 can easily be dismantled for servicing, usually without disturbing pipe connection.

Product Material:
Body and Cover:
 GGG 40.3 Ductile Iron
Inner Parts: Stainless Steel

Application Areas:
 - Liquid flow
 - Hot water boilers
 - Filling and unloading tanks

Connection:
 Threaded, flanged

Installation:
 The cover can be adjusted to fit horizontally and vertically.

CONNECTION	
Threaded	NPT acc. to ANSI B1 20.1 BSP acc. to BS 21
Flanged	DIN 2533

Nominal Diameter:
 DN15 (1/2") – DN25 (1")

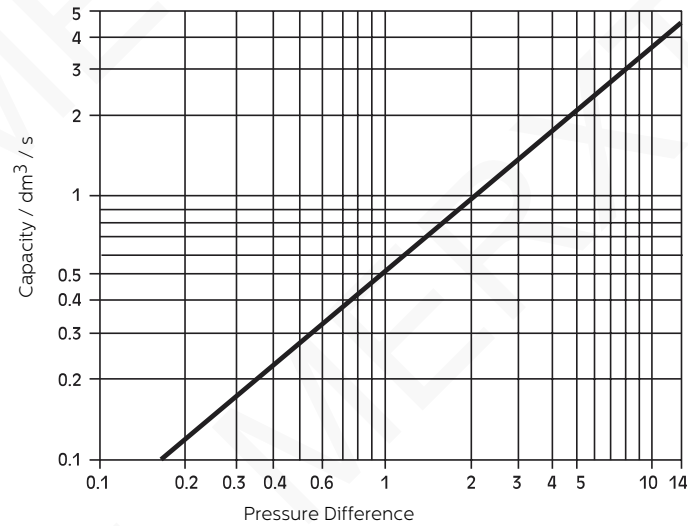
Pressure:
 Max. 16 bar

Working Temperature:
 Max. 250 °C

Connection Type	WEIGHT	
	Flanged	Threaded
Dimensions (mm)	15-20-25	1/2" - 3/4" - 1"
Weight (kg)	4.05 - 4.8 - 7.1	3,2 - 3,2 - 4,7

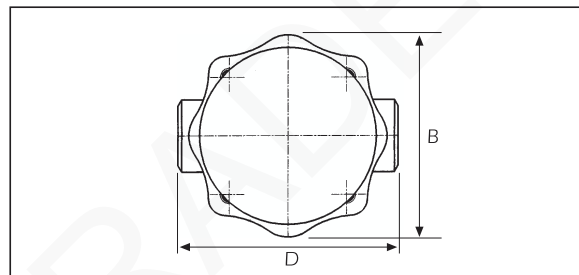
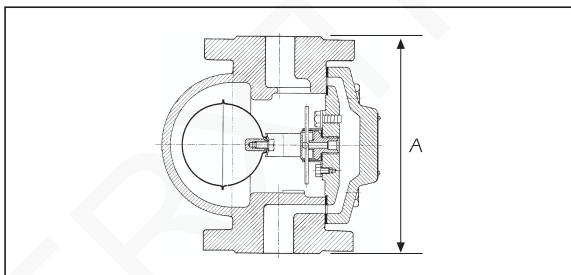
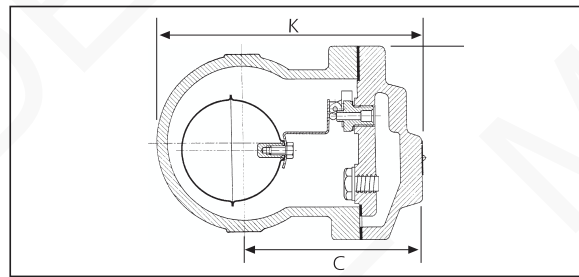
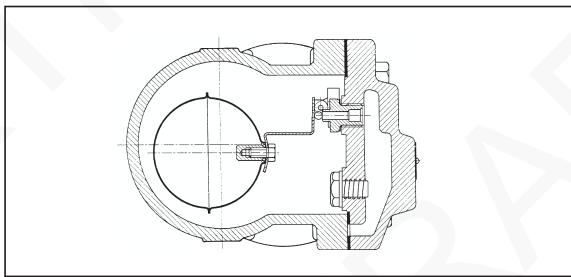
HA-51 FLOAT TYPE AIR ELIMINATOR

Discharge Capacity



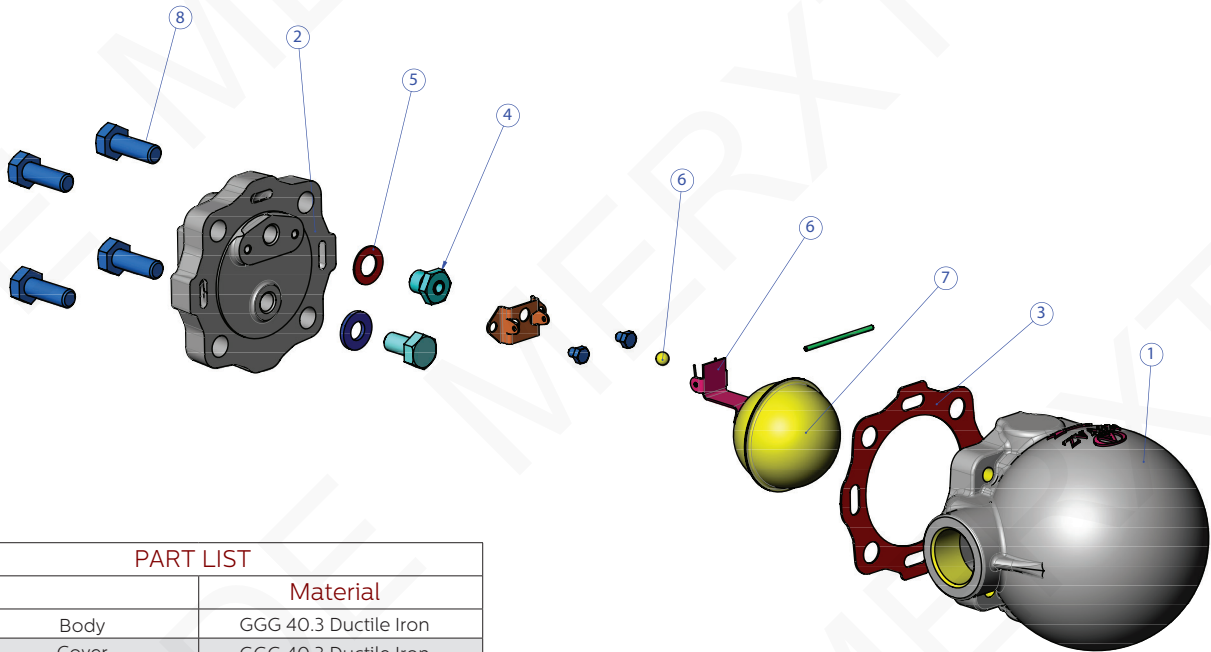
DN 15 - DN 20 - DN 25

DIMENSIONS (mm)					
Dia	A	K	B	C	D
15	150	150	108	68	122
20	150	150	108	68	122
25	160	167	108	107	145



HA-51 FLOAT TYPE AIR ELIMINATOR

HA-51



PART LIST

No		Material
1	Body	GGG 40.3 Ductile Iron
2	Cover	GGG 40.3 Ductile Iron
3	Cover Gasket	Pure Graphite
4	Float Seat	Stainless Steel
5	Seat Gasket	Stainless Steel
6	Float Handle	Stainless Steel
7	Float	Stainless Steel
8	Bolt	8.8